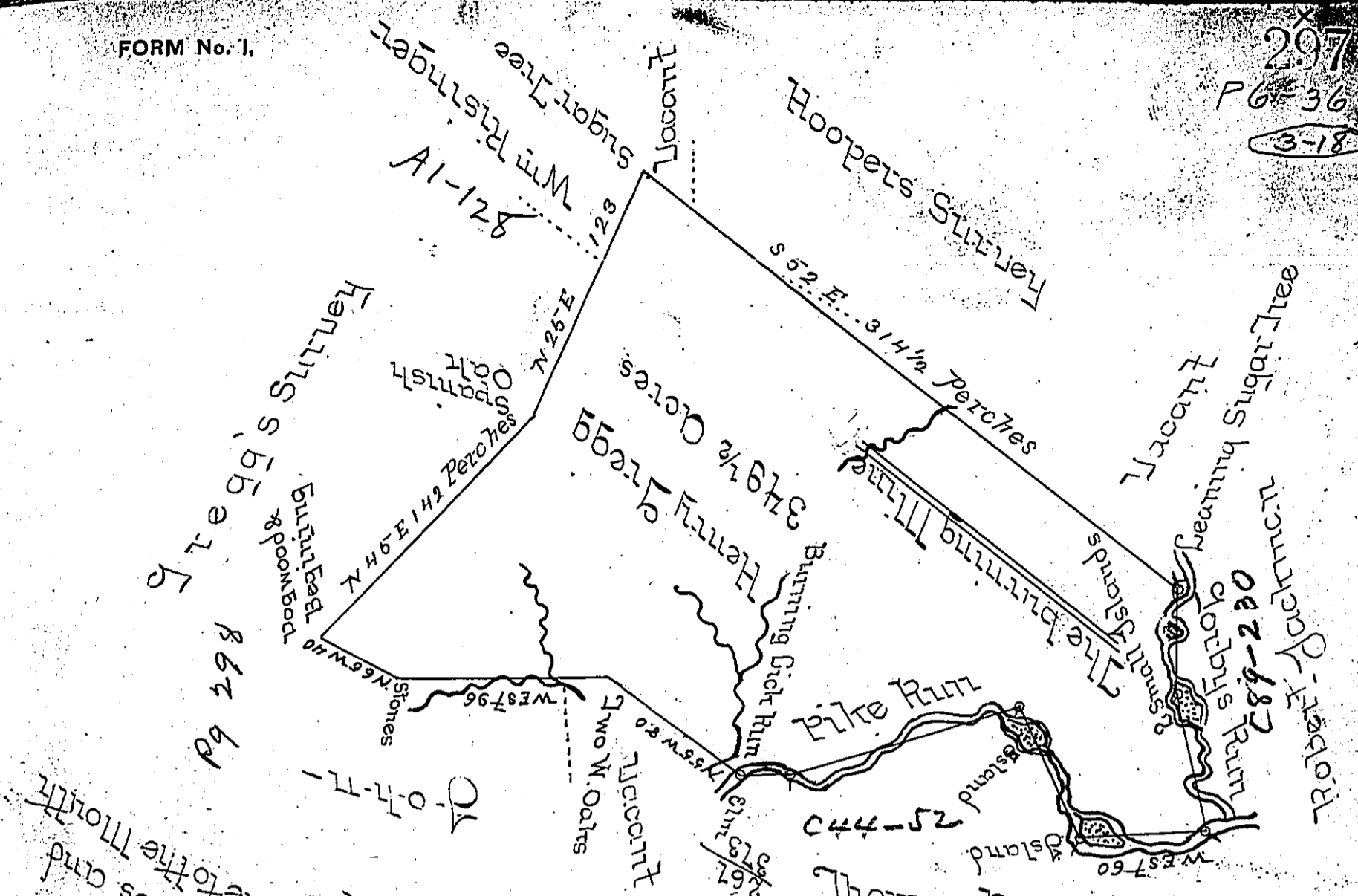


297
P 6 364
3-18



Thomas Dowler
 Courses down Jorby's Run, crossing the Thimble Curves and
 nearly straightening the same, the Run being the line to the Mouth
 and also up Pike Run in the same manner
 West 22 Perches
 S 12 W 114 Perches
 S 12 W 65 Perches
 S 12 E 66 Perches
 S 12 E 76 Perches
 S 12 W 60 Perches
 West 22 Perches

The above is a Draught of a Tract of Land situate on the Waters
 of Pike Run in Washington County called The burning Mine
 Containing 379 1/2 Acres of Land and the Allowance of 6 Percent
 Surveyed June 30th 1755 in pursuance of a Warrant granted
 to Henry Gregg for 350 Acres of Land Dated April 4th 1755

John Lukens Esq: }
 Surveyor Gen: }
 Presley Nevill }
 Math: W. Ritchie }
 D. P.

BE OR

IN TESTIMONY that the above is a copy of the original remaining on file in
 the Department of Internal Affairs of Pennsylvania, made
 conformably to an Act of Assembly approved the 16th day of
 February, 1833, I have hereunto set my Hand and caused
 the Seal of said Department to be affixed at Harrisburg,
 this 8th day of November 1898.

Jameau Lewis
 Secretary of Internal Affairs.